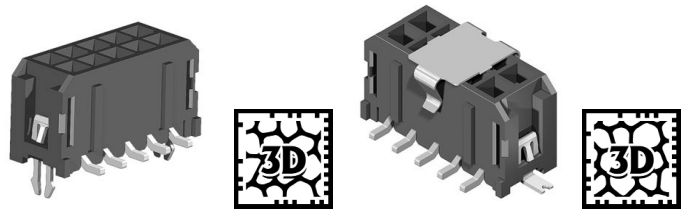
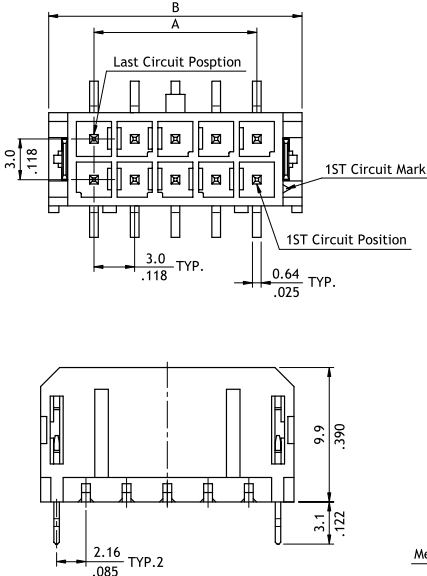


**CP35 Series 3.00mm(.118") Dual Row Top Entry SMT Headers**

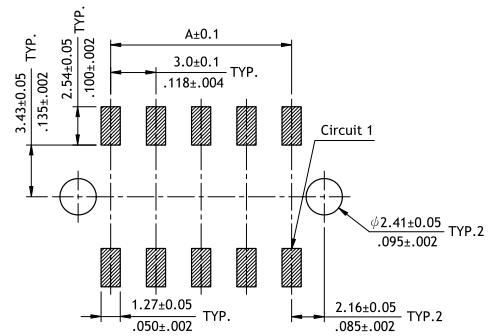
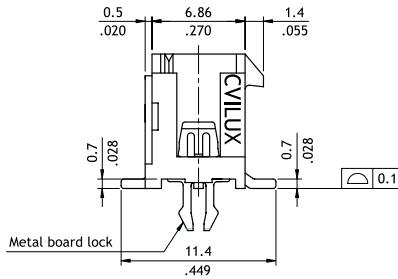
- Mate with CP35 Connector
- Shrouded header with board locks or fixed tabs
- With metal pick and place Pad
- High temperature plastic for SMT process



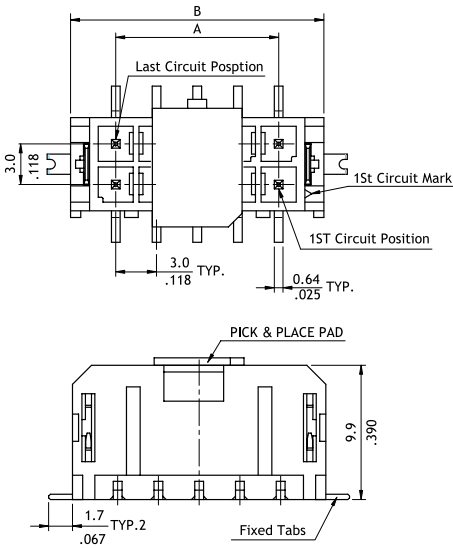
CP



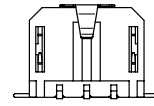
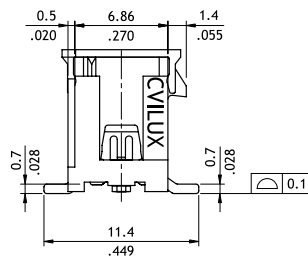
Circuits	Dimension	
	A	B
2	—	6.7(.264)
4	3.0(.118)	9.7(.382)
6	6.0(.236)	12.7(.500)
8	9.0(.354)	15.7(.618)
10	12.0(.472)	18.7(.657)
12	15.0(.591)	21.7(.854)
14	18.0(.709)	24.7(.972)
16	21.0(.827)	27.7(1.091)
18	24.0(.945)	30.7(1.209)
20	27.0(1.063)	33.7(1.327)
22	30.0(1.181)	36.7(1.445)
24	33.0(1.299)	39.7(1.563)



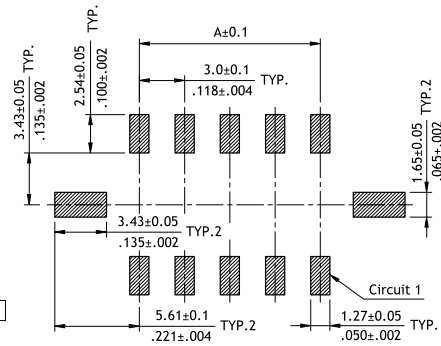
Recommended P.C. Board Layout



Circuits	Dimension	
	A	B
2	—	6.7(.264)
4	3.0(.118)	9.7(.382)
6	6.0(.236)	12.7(.500)
8	9.0(.354)	15.7(.618)
10	12.0(.472)	18.7(.657)
12	15.0(.591)	21.7(.854)
14	18.0(.709)	24.7(.972)
16	21.0(.827)	27.7(1.091)
18	24.0(.945)	30.7(1.209)
20	27.0(1.063)	33.7(1.327)
22	30.0(1.181)	36.7(1.445)
24	33.0(1.299)	39.7(1.563)



For 2,4,6 Circuits



Recommended P.C. Board Layout

**Ordering Code**

**1** CP **2** 35 **3** P **4** 1 **5** V **6** S **7** 0 - **8** NH

- 1** Series No.
- 2** No. of Circuits: 02 to 24
- 3** P = Plug
- 4** Plating: 1 = Matte Tin PAD over Nickel  
\*Optional plating available but MOQ requested
- 5** Contact Type: V = Top Entry
- 6** Mount Type: S = SMT Type

- 7** Other Options:  
0 = With Metal board lock (Standard)  
T = With Fixed Tabs  
(Available for Tape & Reel packing)
- 8** -LF = For Lead Free soldering process  
-NH = For Lead Free soldering process and Halogen-Free

POWER CONNECTOR