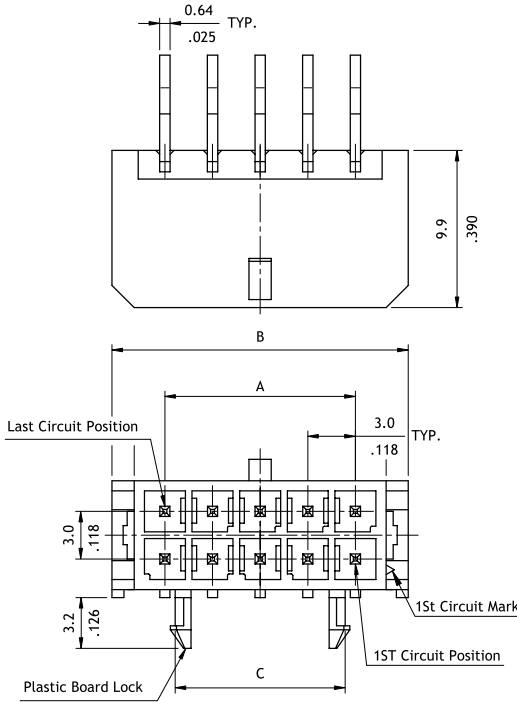
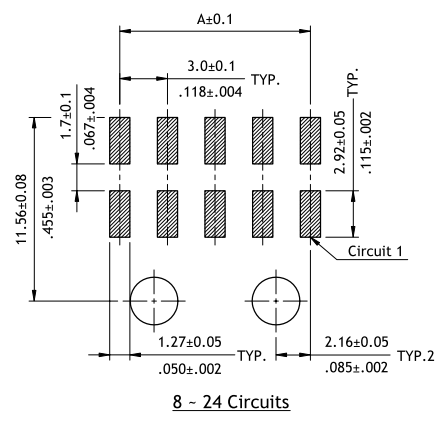
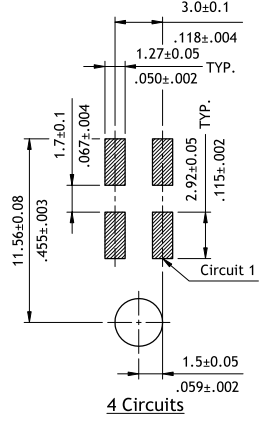
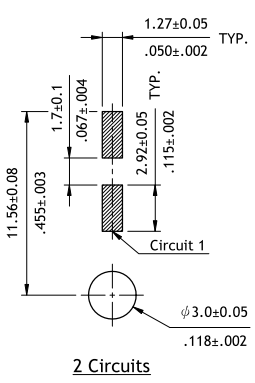
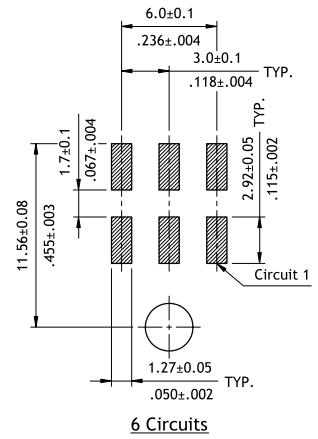
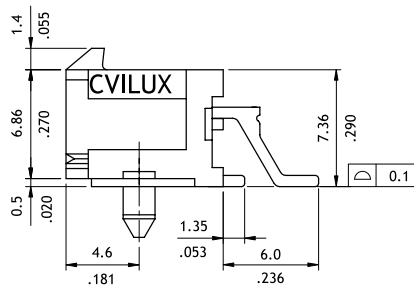


**CP35 Series 3.00mm(.118") Side Entry SMT Headers**

- ⊙ Mates with CP35 Connector
- ⊙ Shrouded header with board locks
- ⊙ High temperature plastic for SMT process



Circuits	Dimension		
	A	B	C
2	—	6.7(.264)	—
4	3.0(.118)	9.7(.382)	—
6	6.0(.236)	12.7(.500)	—
8	9.0(.354)	15.7(.618)	7.7(.303)
10	12.0(.472)	18.7(.657)	10.7(.421)
12	15.0(.591)	21.7(.854)	13.7(.539)
14	18.0(.709)	24.7(.972)	16.7(.657)
16	21.0(.827)	27.7(1.091)	19.7(.776)
18	24.0(.945)	30.7(1.209)	22.7(.894)
20	27.0(1.063)	33.7(1.327)	25.7(1.012)
22	30.0(1.181)	36.7(1.445)	28.7(1.130)
24	33.0(1.299)	39.7(1.563)	31.7(1.248)



Recommended P.C. Board Layout

**Ordering Code**

**1** **2** **3** **4** **5** **6** **7** **8**  
**CP35 24 P 1 H S 0 - LF**

- 1** Series No.
- 2** No. of Circuits: 02 to 24
- 3** Contact Type:  
P = Plug
- 4** Contact plated:  
1 = Tin over Nickel  
\*Optional plating available but MOQ requested
- 5** Contact Type:  
H = Side Entry Type
- 6** Mount Type:  
S = SMT Type
- 7** Other Options:  
0 = With Metal board lock (Standard)  
T = With Fixed Tabs  
(Available for Tape & Reel Packing)  
P = With plastic board lock
- 8** -LF = For Lead Free soldering process